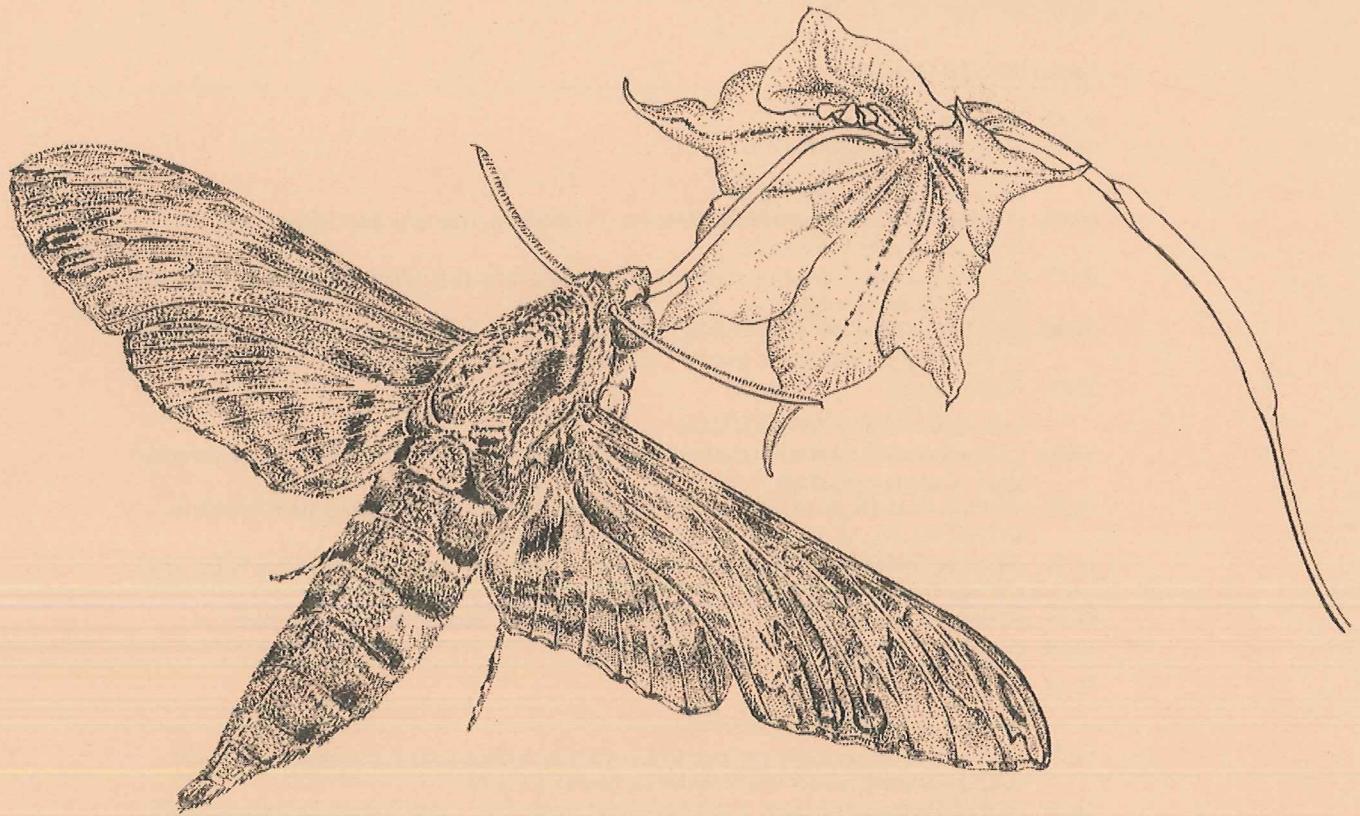


Jai

20th SCAPE Symposium 2006



20 – 22 October 2006
Gålö, Sweden

SCAPE 2006 PROGRAMME

Friday 20 October

15.00 Arrival and registration

18.00 Dinner

20.00 Postersession: Chair Tommy Lennartsson

21.00 Get-together

Saturday 21 October

07.30 Breakfast

08.50 Welcome to SCAPE 2006!

1st session: Chair Jon Ågren

09.00 (1) Miguel Rodriguez-Girones: Resource competition, character displacement and evolution of deep corolla tubes

09.20 (2) Elin Boberg: Population differentiation and reproductive isolation in the moth-pollinated orchid, *Platanthera bifolia*

09.40 (3) Elisa Vallius: Does presence of hybrid plants interfere pollination of parent species in co-occurring populations of *Dactylorhiza incarnata* and *D. fuchsii* (Orchidaceae)?

10.00 Coffee break

2nd session: Chair Johanne Maad

10.30 (4) Raúl García Camacho: Context-dependent mating success in a mediterranean mountain plant: *Armeria caespitosa*

10.50 (5) Stein Joar Hegland: Interspecific facilitation for pollination through floral similarity increase reproductive success in obligatory outcrossing plants

11.10 (6) Anke Dietzsch: The trouble maker - does invasive *Rhododendron ponticum* effect native pollination processes?

11.30 (7) Martin Cravener: Male and Female Reproductive Success in *Parnassia palustris*

12.20 Lunch

13.20 Excursion with Kari Lehtilä

3d session: Chair Bodil Ehlers

14.20 (8) Virve Sõber: Positive and negative insect-plant interactions affecting seed set in two congeneric plant species with contrasting breeding systems

14.40 (9) Per Toräng: Attraction of mutualists and antagonists: Context-dependent reproductive success in a dimorphic plant

15.00 (10) Jelmer A. Elzinga: Experimental manipulation of flowering synchronicity and effect on pollination/seed predation by *Hadena bicruris*

15.20 (11) Elin Boalt: Tolerance to folivory and apex removal in the annual plant *Raphanus raphanistrum* in different competitive environments: mechanisms and costs

15.40 Coffee break

4th session: Chair Bente Eriksen

16.20 (12) Anna-Liisa Laine: Coevolution of pollinators and plants at the edges of geographic ranges

16.40 (13) Livia Wanntorp: Utmost sophistication and delicate fragrance - for whom? A review on the flowers of *Hoya* (Apocynaceae), an ecologically unexplored genus

17.00 (14) Nils Cronberg: Sperm transfer in mosses mediated by microarthropods - a parallel to pollination in flowering plants?

5th session: Chair Emil Nilsson

17.30 (15) Giorgina Bernasconi: Multiple paternity and its consequences in the white campion

17.50 (16) Åsa Lankinen: Sexual conflict over receptivity: an ESS approach

18.10 (17) Anne Burkhardt: Effect of inter-pollination interval on paternity in the white campion

19.30 SCAPE banquet

announced
Kari Lehtilä

SCAPE 2006 PROGRAMME, continued

Sunday 22 October

07.30 Breakfast

6th session: Chair Marcos Méndez

09.00 (18) Martina Stang: Asymmetric specialization in plant - flower visitor webs: a matter of morphology or abundance?

09.20 (19) Anders Nielsen: Ecological networks, nestedness and sampling effort

09.40 (20) Virginia González-Álvaro: Nectar as water resource in a ruderal plant community: influence on the generalization level of the potential pollinators visits

10.00 (21) Karin Ahrné: Bumblebee diversity and abundance in an urban setting

10.20 Coffee break

7th session: Chair Johan Ehrlén

10.50 (22) Eva Grøndahl: Indirect effects of aromatic oil production in *Thymus* on the performance of associated plant species

11.10 (23) Susanna Saari: Endophyte-infected meadow fescue in biological control

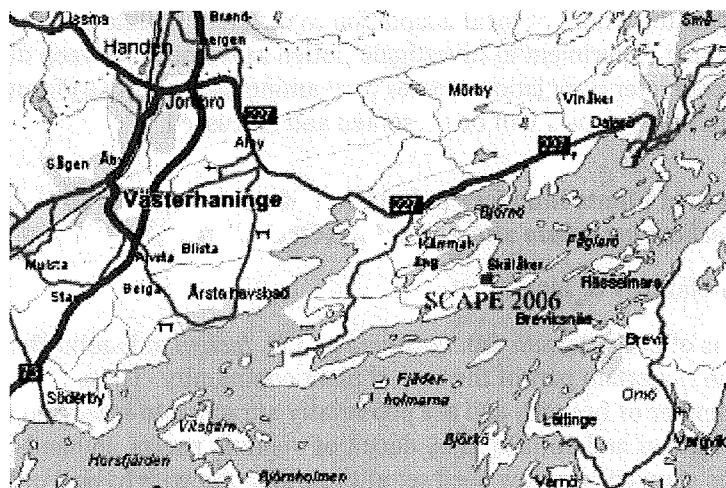
11.30 (24) Päivi Lehtonen: Fungal endophyte mediated trophic interactions in grasses: from ecology to applications

12.20 Lunch

13.30 Goodbye. SCAPE 2007?

Welcome to the 20th SCAPE symposium!

Gålö is a peninsula in the southern part of the Stockholm archipelago. In the 40ies, Swedish marines were secretly training grey seals and eagle owls to spot foreign submarines in the area. They were not successful. But now, the 20th SCAPE meeting is held in the former military localities. *Success is inevitable.*



Please, clean the cabins before you depart on Sunday. On Sunday afternoon, buses leave from Gålovägen at 14.40, 15.40, 16.40. Trains for Stockholm leave from Handen every 15 min.

Organizing committee: Jon Ågren, Johanne Maad, Johan Ehrlén, Kari Lehtilä & Tommy Lennartsson

Crew: Reiko Akiyama, Elin Boberg, Magnus Larsson, Emil Nilsson, Adriana Puentes, Saskia Sandring, Per Toräng

Cover picture: A *Agrius convolvuli* working a *Gladiolus longicollis*. Illustration: Angela Beaumont

LIST OF PARTICIPANTS

<i>Name</i>	<i>Department and University</i>	<i>Country</i>	<i>E-mail</i>
Jon Ågren	Plant Ecology, Uppsala University	Sweden	jon.agren@ebc.uu.se
Karin Åhrné	Entomology, Swedish University of Agricultural Sciences	Sweden	karin.ahrne@evp.slu.se
Reiko Akiyama	Plant Ecology, Uppsala University	Sweden	Reiko.Akiyama@ebc.uu.se
Giorgina Bernasconi	Ecology and Evolution, University of Lausanne	Switzerland	Giorgina.Bernasconi@unil.ch
Koos Biesmeijer	Biology, University of Leeds	United Kingdom	j.c.biesmeijer@leeds.ac.uk
Elin Boalt	Plant Ecology, Södertörn University College	Sweden	elin.boalt@sh.se
Elin Boberg	Plant Ecology, Uppsala University	Sweden	elin.boberg@ebc.uu.se
Grazyna Bochenek	Plant and Environmental Sciences, Göteborg University	Sweden	grazyna.bochenek@botany.gu.se
Riccardo Bommarco	Entomology, Swedish University of Agricultural Sciences	Sweden	Riccardo.Bommarco@entom.slu.se
Anna-Karin Borg-Karlson	Chemistry, Royal Institute of Technology	Sweden	akbk@kth.se
Anne Burkhardt	Ecology and Evolution, University of Lausanne	Switzerland	anne.burkhardt@unil.ch
Martin Cravener	Plant Ecology, Södertörn University College	Sweden	martin.cravener@sh.se
Nils Cronberg	Plant Ecology and Systematics, Lund University	Sweden	Nils.Cronberg@ekol.lu.se
Anke Dietzsch	Botany, University of Dublin	Ireland	dietzsca@tcd.ie
Karl Duffy	Botany, University of Dublin	Ireland	duffy@tcd.ie
Bodil K. Ehlers	Genetics and Ecology, University of Aarhus	Denmark	bodil.ehlers@biology.au.dk
Johan Ehrlén	Botany, Stockholm University	Sweden	johan.ehrlen@botan.su.se
Jelmer A. Elzinga	Ecology and Evolution, University of Lausanne	Switzerland	jelmeranne.elzinga@unil.ch
Bente Eriksen	Plant and Environmental Sciences, Göteborg University	Sweden	Bente.eriksen@botany.gu.se
Raúl García Camacho	Biodiversity & Conservation, University Rey Juan Carlos	Spain	raul.garcia@urjc.es
José M. Gómez	Ecology, University of Granada	Spain	jmgreyes@ugr.es
Virginia González-Álvaro	Genetics and Ecology, University of Aarhus	Denmark	virginia.gonzalez-alvaro@biology.au.dk
Eva Grøndahl	Genetics and Ecology, University of Aarhus	Denmark	evagn@biology.au.dk
David Gustavsson	-	Sweden	-
Stein Joar Hegland	Ecology and Natural Resource Management, Norwegian University of Life Sciences	Norway	stein.hegland@umb.no
Kristina Holmén Bränn	Botany, Stockholm University	Sweden	kristina.holmen@botan.su.se
Kerstin Isaksson	Plant Ecology and Systematics, Lund University	Sweden	kerstin.isaksson@ekol.lu.se
Annette Kolb	Ecology and Evolutionary Biology, University of Bremen	Germany	akolb@uni-bremen.de
Manja M. Kwak	Biology, University of Groningen	Netherlands	M.M.Kwak@rug.nl
Anne-Marie Labouche	Ecology and Evolution, University of Lausanne	Switzerland	marielabouche@yahoo.fr
Anna-Liisa Laine	Biological and Environmental Sciences, University of Helsinki	Finland	anna-liisa.laine@helsinki.fi
Åsa Lankinen	Plant Ecology and Systematics, Lund University	Sweden	asa.lankinen@ekol.lu.se
Magnus Larsson	Plant Ecology, Uppsala University	Sweden	magnus.larsson@ebc.uu.se
Liisa Laukkanen	Ecology, University of Turku	Finland	liisa.laukkanen@utu.fi
Amparo Lazaro	Ecology and Natural Resource Management, Norwegian University of Life Sciences	Norway	amparo.lazaro@umb.no
Kari Lehtilä	Plant Ecology, Södertörn University College	Sweden	kari.lehtila@sh.se
Päivi Lehtonen	Ecology, University of Turku	Finland	lehtonen.paivi@gmail.com

Roosa Leimu	Biological and Environmental Science, University of Jyväskylä	Finland	roosa.leimu@utu.fi
Tommy Lennartsson	Conservation Biology, Swedish University of Agricultural Sciences	Sweden	tommy.lennartsson@nvb.slu.se
Rebekka Lundgren	Ecology and Natural Resource Management, Norwegian University of Life Sciences	Norway	rebekka.lundgren@umb.no
Johanne Maad	Plant Ecology, Uppsala University	Sweden	johanne.maad@ebc.uu.se
Josefin Madjidian	Plant Ecology and Systematics, Lund University	Sweden	josefin.madjidian@ekol.lu.se
Karen Marie Mathisen	Forerstry and Wildlife Management, Hedmark University College	Norway	karen.mathisen@hihm.no
Carolin Mayer	Biocentre Klein Flottbek, University of Hamburg	Germany	cmayer@botanik.uni-hamburg.de
Marcos Méndez	Biodiversity and Conservation, University Rey Juan Carlos	Spain	marcos.mendez@urjc.es
Caoimhe Muldoon	Botany, University of Dublin	Ireland	Muldoocs@tcd.ie
Anne Muola	Ecology, University of Turku	Finland	anmam@utu.fi
Anders Nielsen	Ecology and Natural Resource Management, Norwegian University of Life Sciences	Norway	anders.nielsen@umb.no
Caroline Nienhuis	Botany, University of Dublin	Ireland	nienhuic@tcd.ie
Emil Nilsson	Plant Ecology, Uppsala University	Sweden	emil.nilsson@ebc.uu.se
Jeff Ollerton	Environmental Sciences, University of Northampton	United Kingdom	jeff.ollerton@northampton.ac.uk
Aina Pihlgren	Conservation Biology, Swedish University of Agricultural Sciences	Sweden	aina.pihlgren@nvb.slu.se
Adriana Puentes	Plant Ecology, Uppsala University	Sweden	adriana.puentes@ebc.uu.se
Marianna Riipi	Biological and Environmental Science, University of Jyväskylä	Finland	pimariip@cc.jyu.fi
Miguel Rodriguez-Girones	Functional and Evolutionary Ecology, Spanish National Council for Research	Spain	rgirones@eeza.csic.es
Knut Rydgren	Science, Sogn og Fjordane University College	Norway	knut.rydgren@hisf.no
Susanna Saari	Ecology, University of Turku	Finland	susanna.saari@mtt.fi
Saskia Sandring	Plant Ecology, Uppsala University	Sweden	saskia.sandring@ebc.uu.se
N. Erik Sjödin	Entomology, Swedish University of Agricultural Sciences	Sweden	erik.sjodin@evp.slu.se
Nina Sletvold	Biology, University of Oslo	Norway	nina.sletvold@nhm.uio.no
Joop C. Smittenberg	-	Netherlands	-
Virve Sõber	Botany and Ecology, University of Tartu	Estonia	virves@ut.ee
Eman Soubani	Plant Ecology and Systematics, Lund University	Sweden	eman.soubani@ekol.lu.se
Martina Stang	Plant Ecology, Leiden University	Netherlands	m.stang@biology.leidenuniv.nl
Sam Tarrant	Environmental Sciences, University of Northampton	United Kingdom	sam_tarrant@hotmail.com
Per Toräng	Plant Ecology, Uppsala University	Sweden	per.torang@ebc.uu.se
Ørjan Totland	Ecology and Natural Resource Management, Norwegian University of Life Sciences	Norway	orjan.totland@umb.no
Elisa Vallius	Botany, University of Dublin	Ireland	valliuse@tcd.ie, elisa.vallius@luukku.com
Didrik Vanhoenacker	Botany, Stockholm University	Sweden	didrik@botan.su.se
Livia Wanntorp	Botany, Stockholm University	Sweden	livia.wanntorp@botan.su.se
Stella Watts	Environmental Sciences, University of Northampton	United Kingdom	hummingbird_pe@yahoo.com
Renate Wesselingh	Ecology and Biogeography, Université catholique de Louvain	Belgium	wesselingh@ecol.ucl.ac.be